



# Groundwater Sustainability Commission Meeting

**APRIL 7, 2021**

PREPARED BY WATER SYSTEMS CONSULTING





# **Public Comment – Items not on Agenda**

Chair



# Public Comments



## By phone:

Dial \*9 (then \*6 to unmute when prompted)

## From your computer:

Raise your hand by clicking the raise hand icon



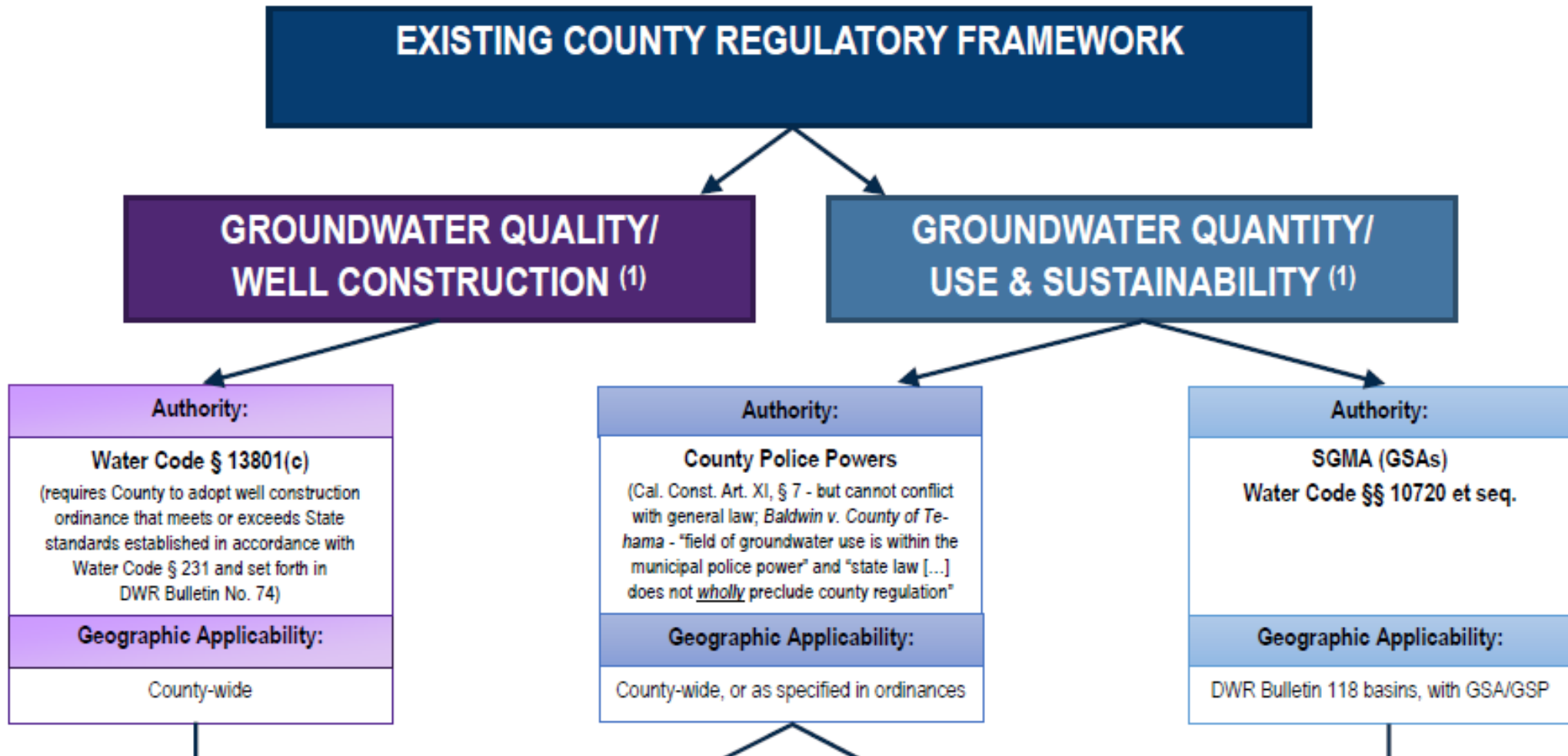
# **Presentation on Existing County Regulatory Framework**

Mladen Brandov



# County Regulatory Framework for Groundwater Management

Attachment 2 - County Regulatory Framework for Groundwater Management





# Public Comments



## By phone:

Dial \*9 (then \*6 to unmute when prompted)

## From your computer:

Raise your hand by clicking the raise hand icon





# Sustainable Management Criteria Discussion



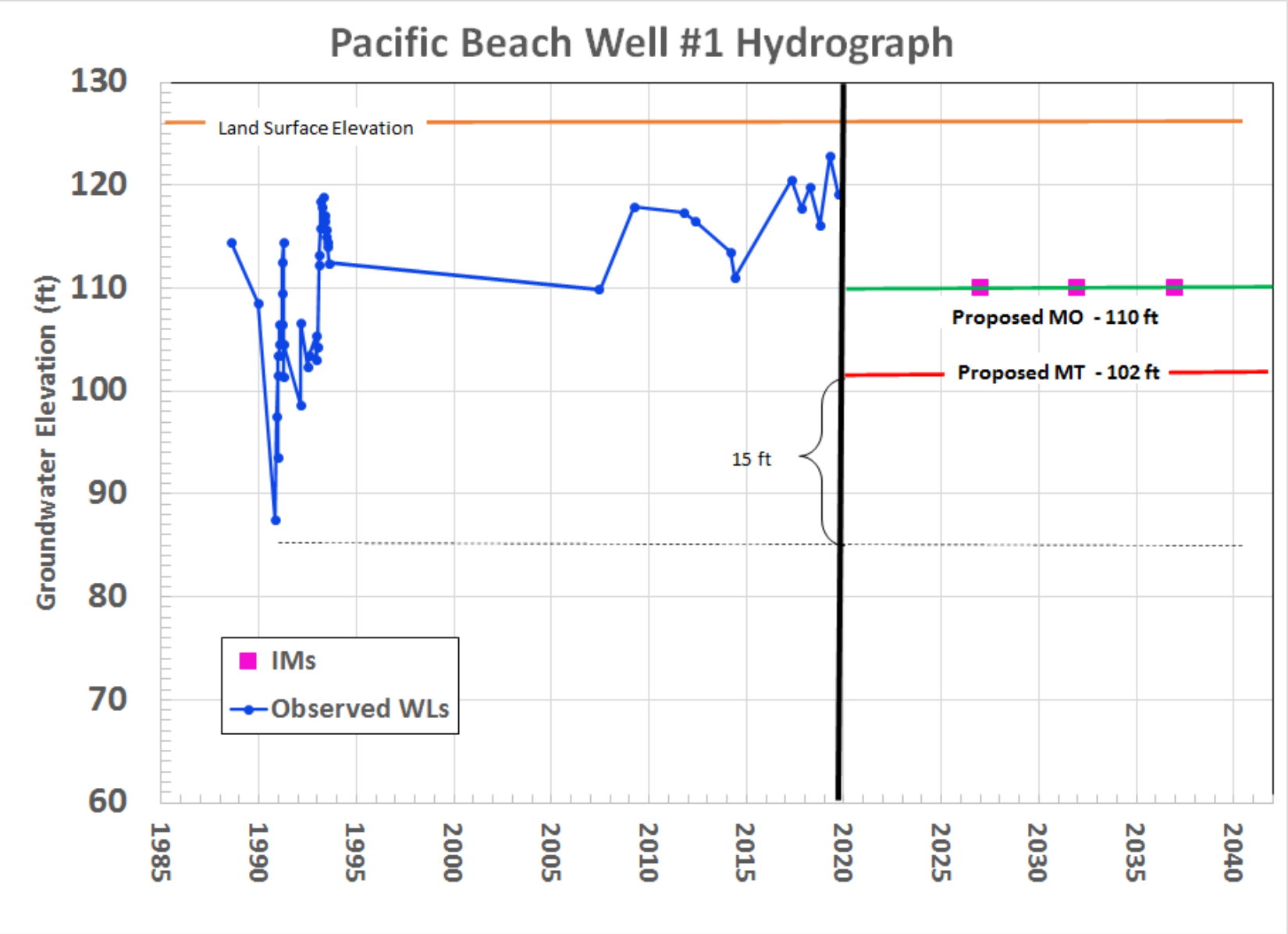
---

# Sustainable Management Criteria Summary

- Sustainable Management Criteria in the 2021 SLO Basin GSP is a starting point
- No single rationale or method works across the entire basin
- Limited data (streamflow, groundwater production, water levels) may cause uncertainty in defining thresholds and will require updates as more data is collected over time
- The SMCs can be updated in the 5-year GSP update
- Chapter 8 – Sustainable Management Criteria scheduled for release at the May 5th GSC meeting



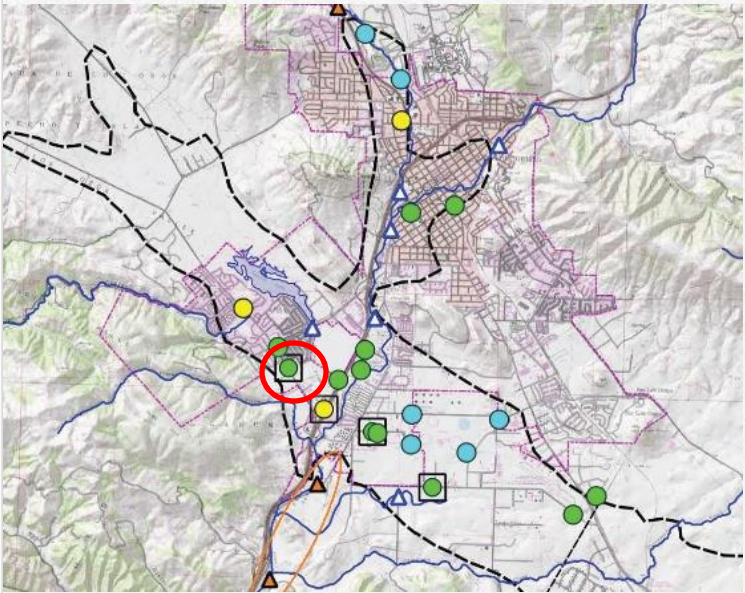
# Recommended SMC -- SLV-09



**LAND  
SUBSIDENCE**

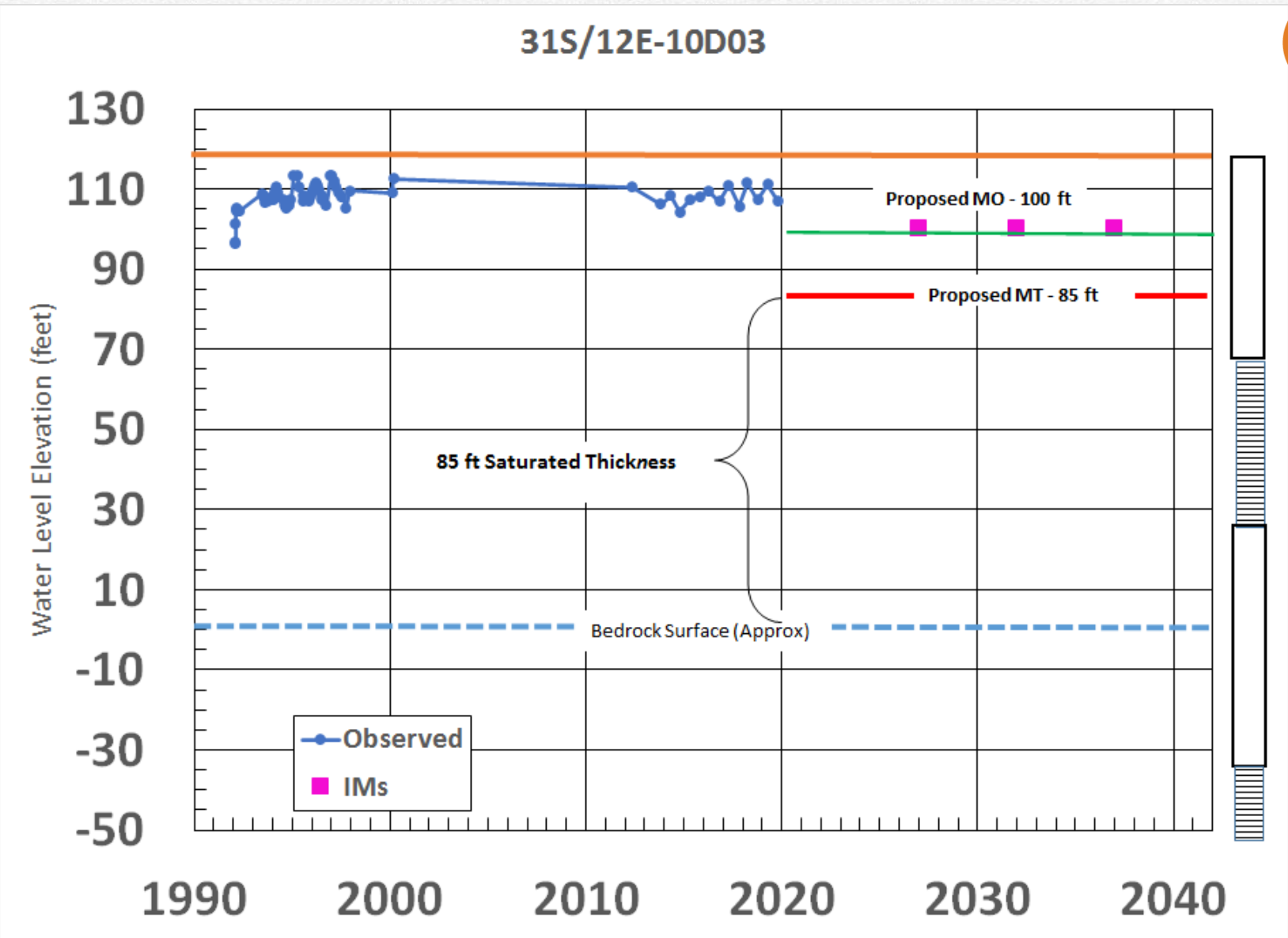


**CHRONIC  
LOWERING OF  
GROUNDWATER  
LEVELS**





# Recommended SMC -- SLV-12



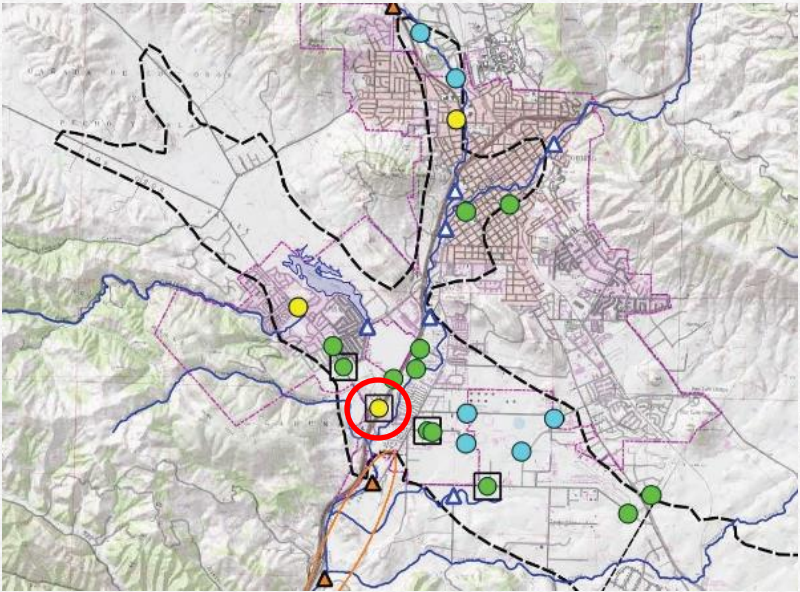
CHRONIC  
LOWERING OF  
GROUNDWATER  
LEVELS



REDUCTION OF  
GROUNDWATER  
STORAGE



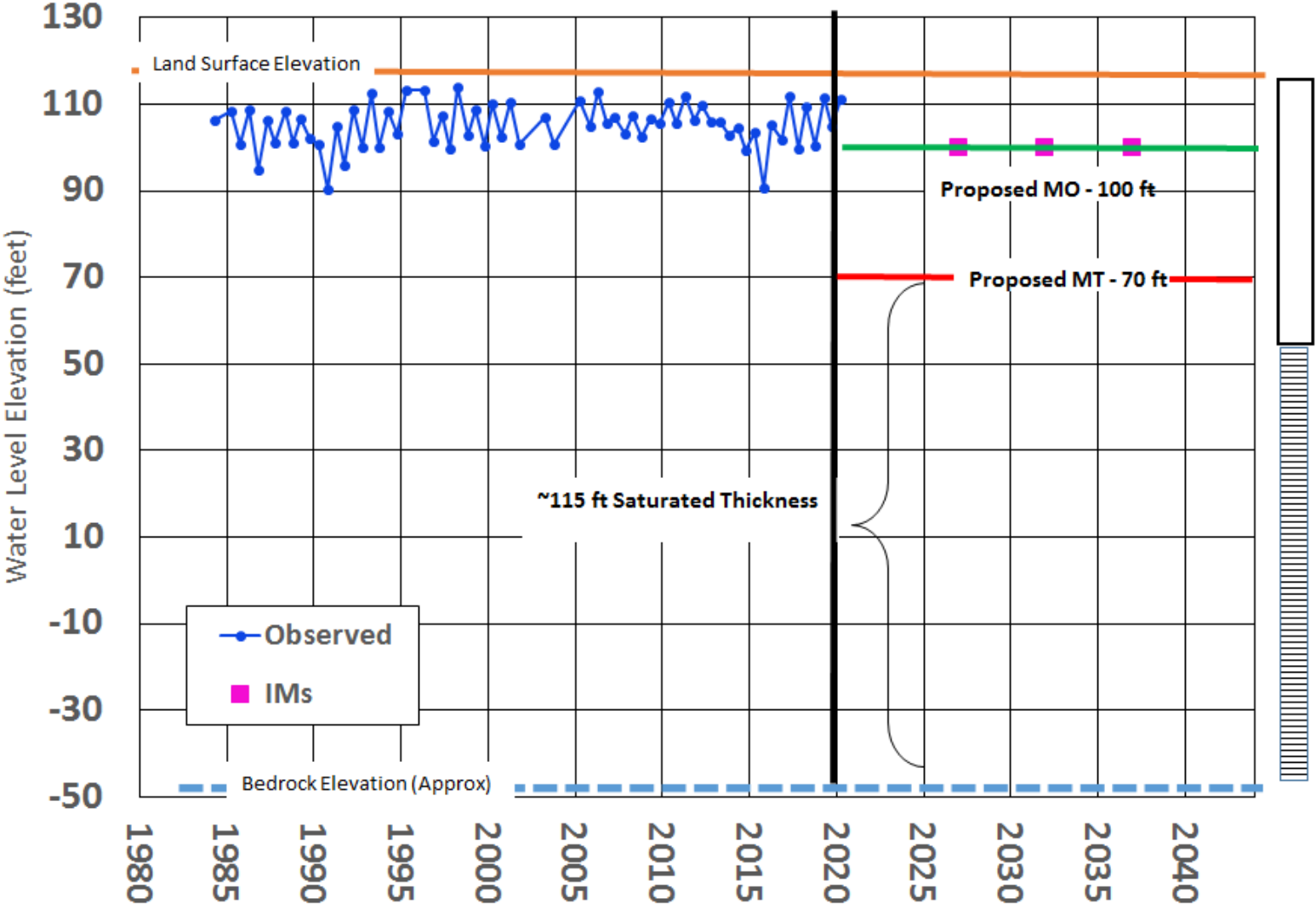
INTER-  
CONNECTED  
SURFACE  
WATER  
DEPLETIONS





# Recommended SMC -- SLV-16

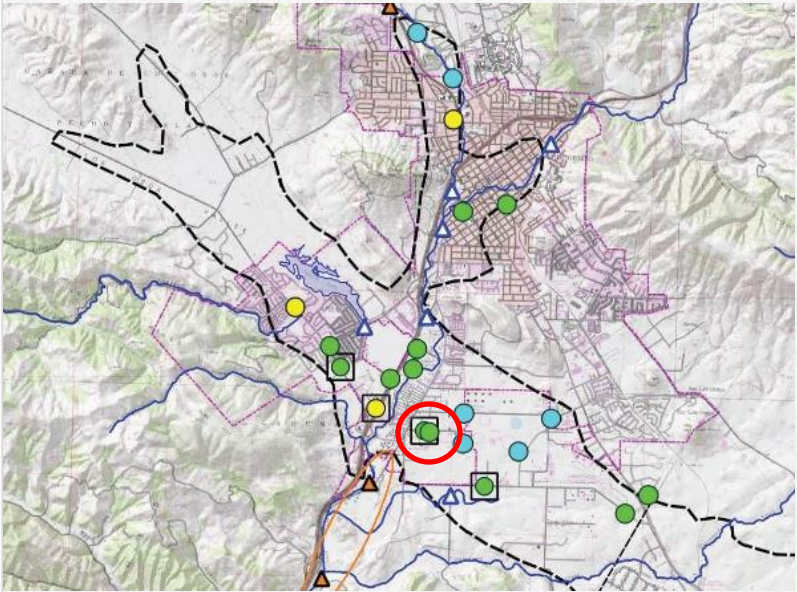
31S/12E-10H03



CHRONIC  
LOWERING OF  
GROUNDWATER  
LEVELS



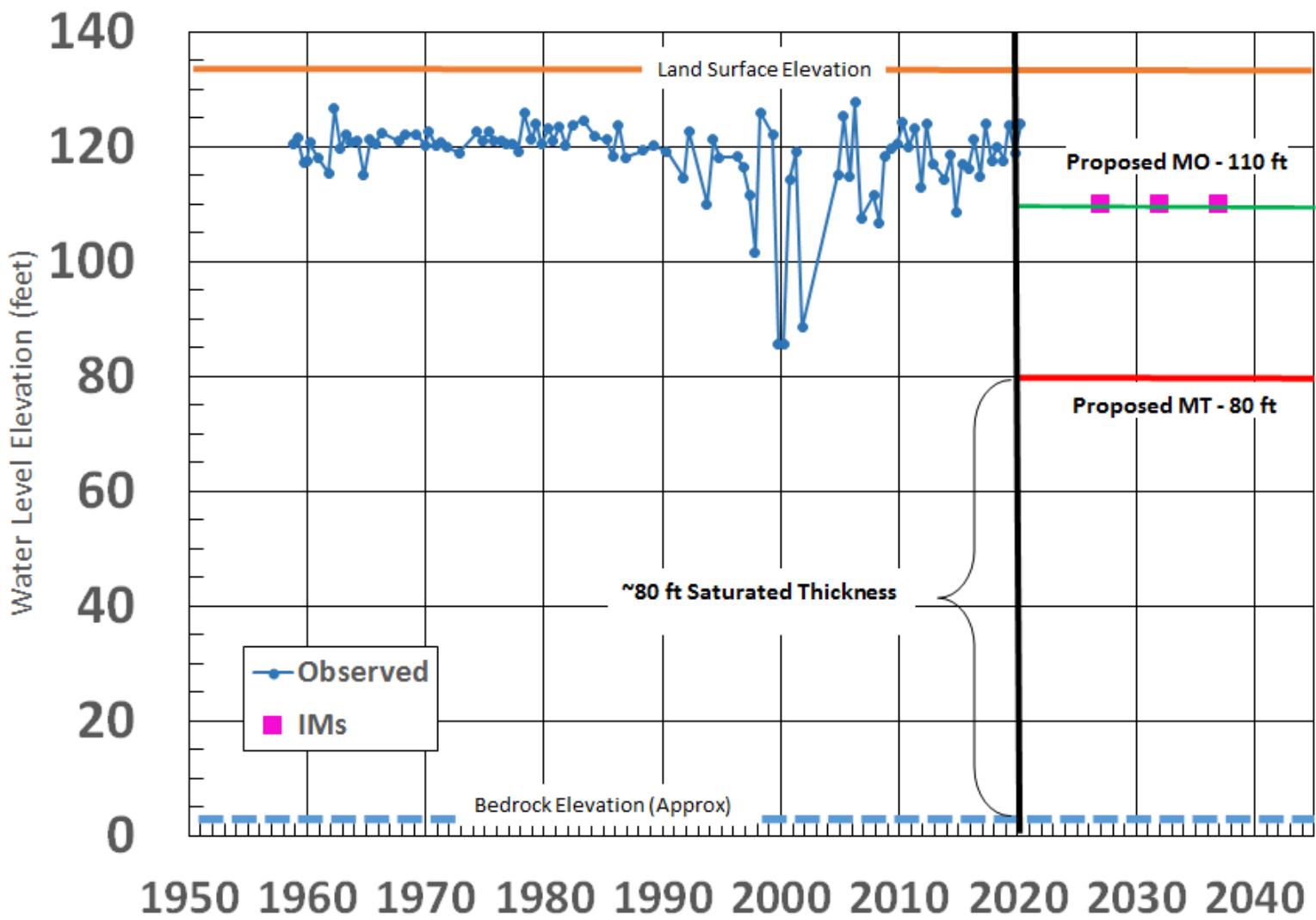
REDUCTION OF  
GROUNDWATER  
STORAGE





# Recommended SMC -- SLV-19

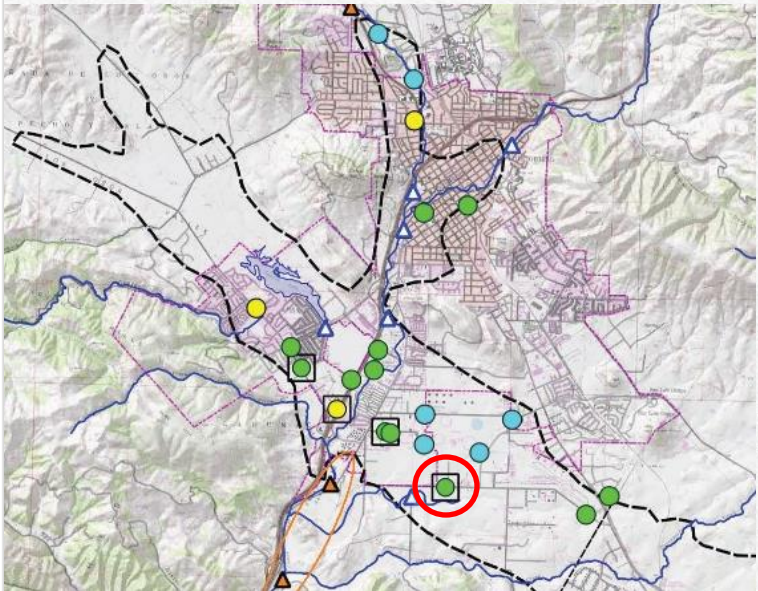
31S/12E-14C01



CHRONIC  
LOWERING OF  
GROUNDWATER  
LEVELS

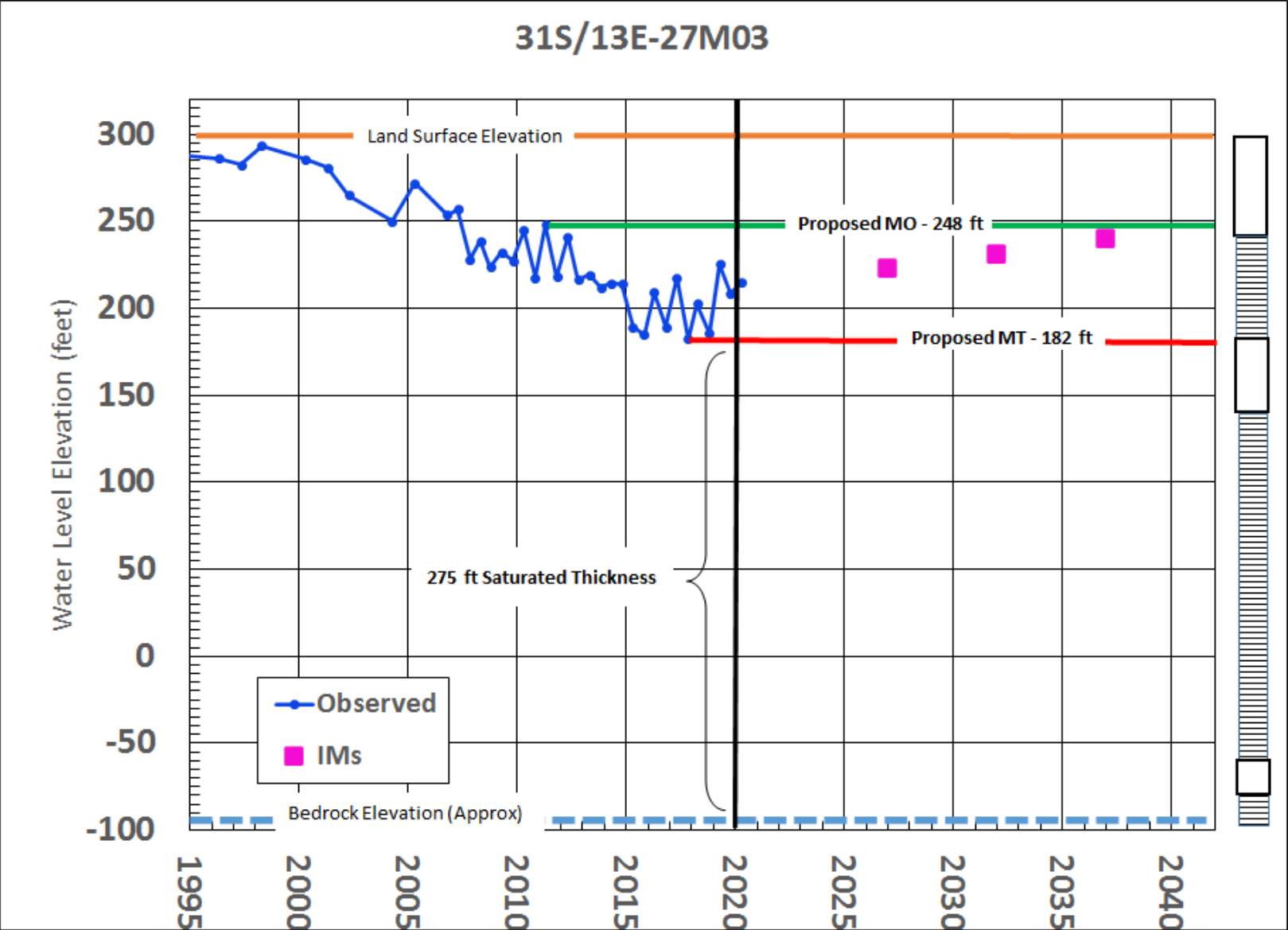


REDUCTION OF  
GROUNDWATER  
STORAGE





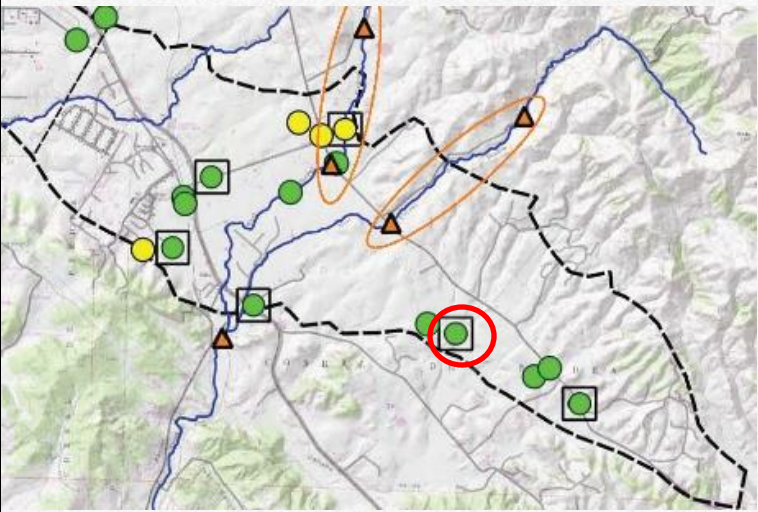
# Recommended SMC -- EV-16



**CHRONIC  
LOWERING OF  
GROUNDWATER  
LEVELS**



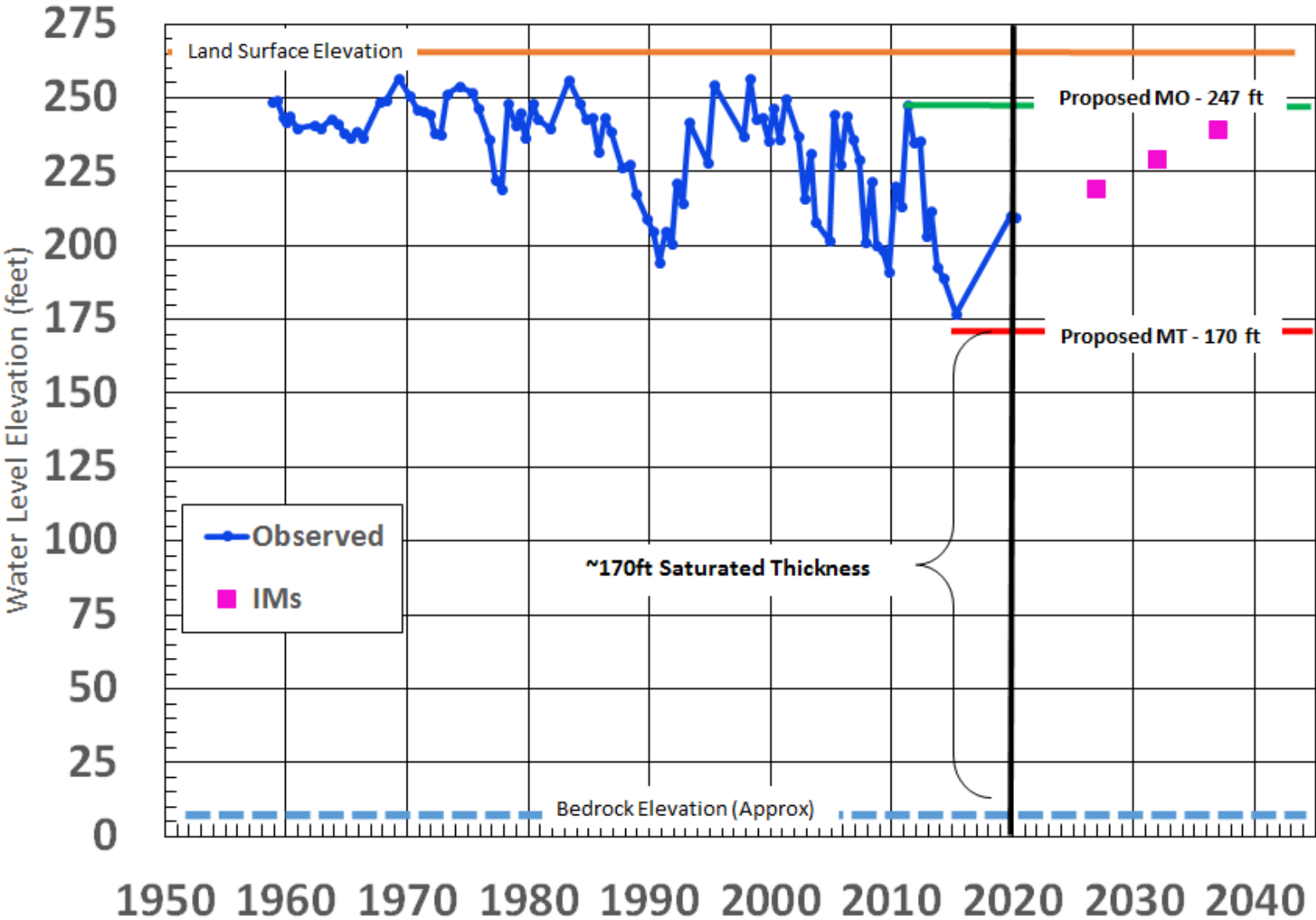
**REDUCTION OF  
GROUNDWATER  
STORAGE**





# Recommended SMC -- EV-04

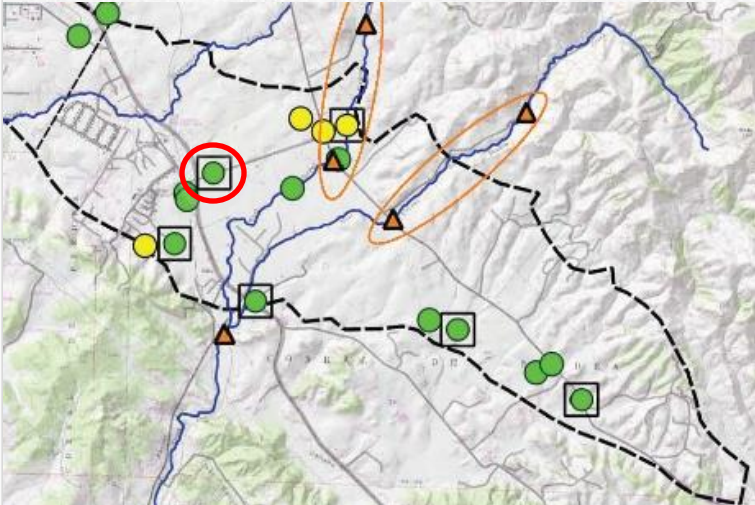
31S/13E-19H01



**CHRONIC  
LOWERING OF  
GROUNDWATER  
LEVELS**



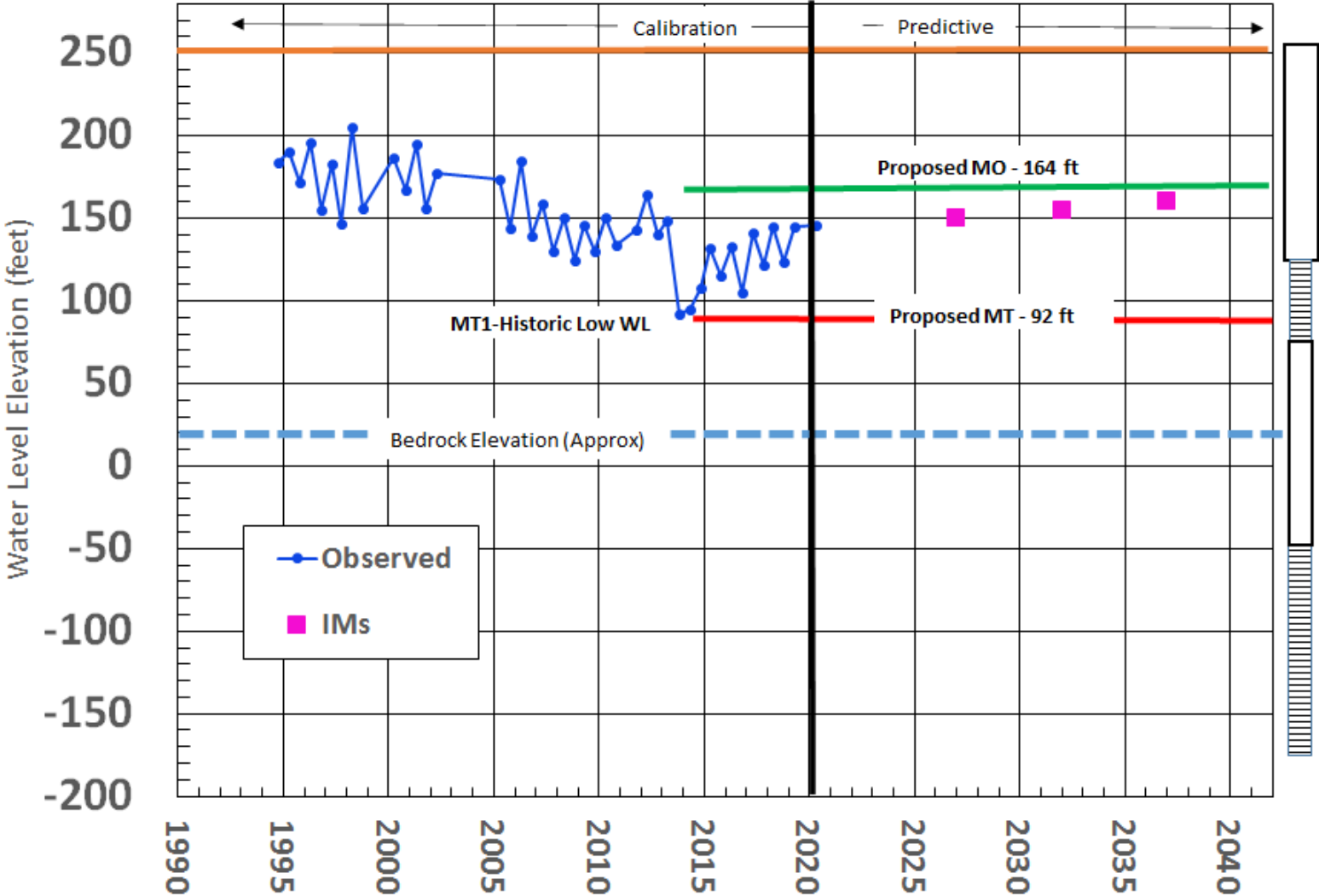
**REDUCTION OF  
GROUNDWATER  
STORAGE**





# Recommended SMC -- EV-09

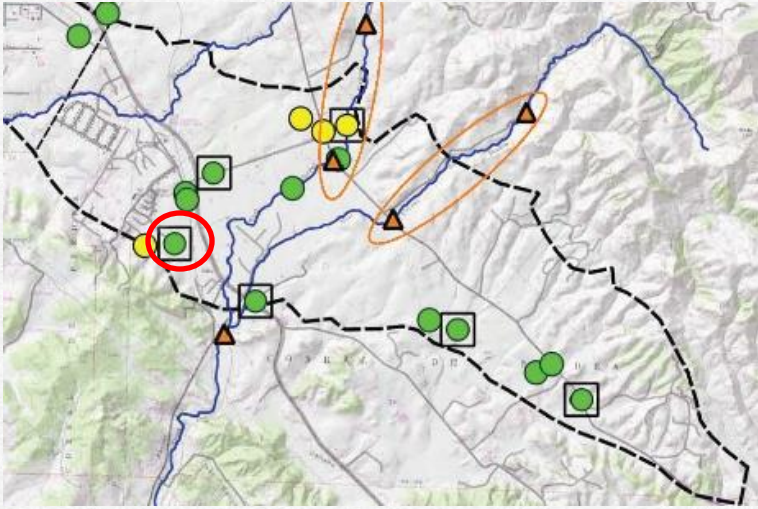
31S/13E-19R03



**CHRONIC  
LOWERING OF  
GROUNDWATER  
LEVELS**



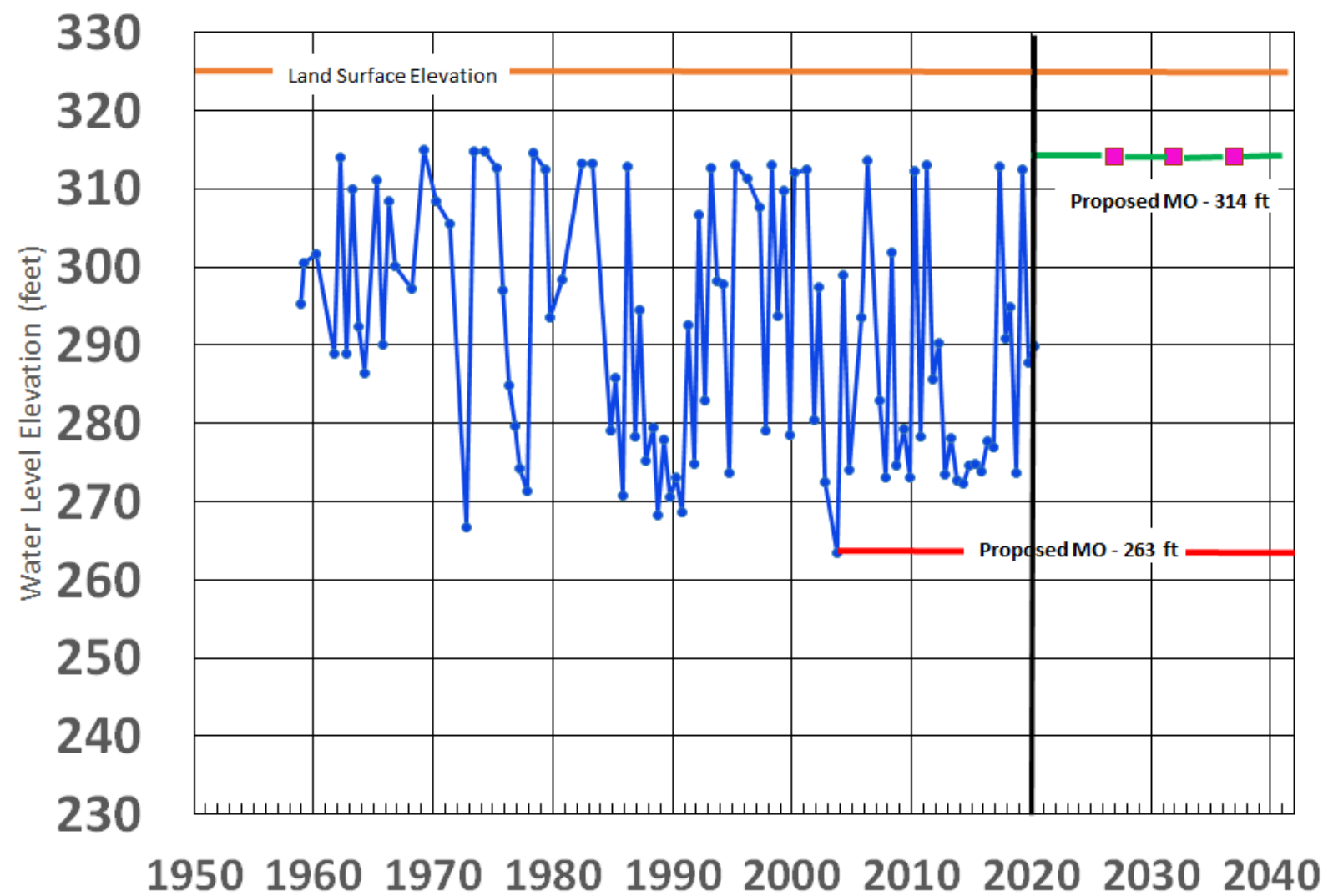
**REDUCTION OF  
GROUNDWATER  
STORAGE**





# Recommended SMC -- EV-01

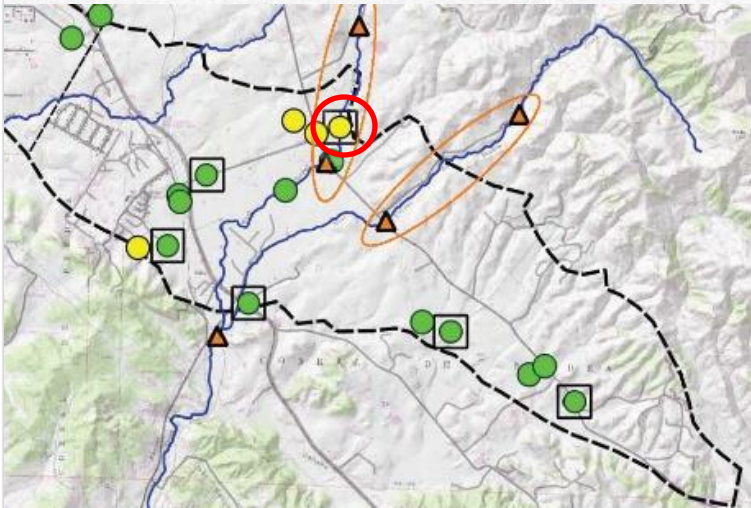
31S/13E-16N01 Lindsey Edna



INTER-  
CONNECTED  
SURFACE  
WATER  
DEPLETIONS

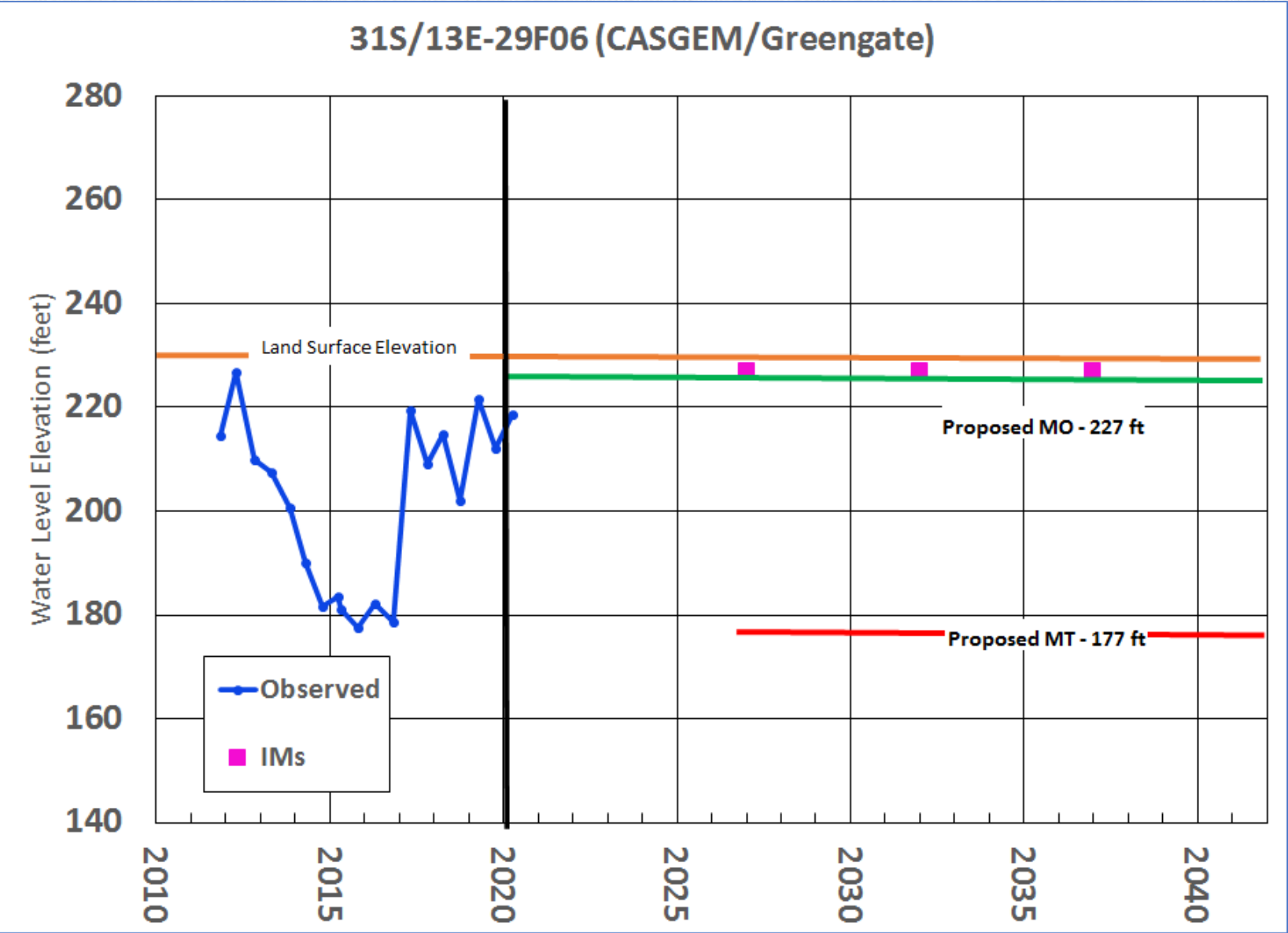


CHRONIC  
LOWERING OF  
GROUNDWATER  
LEVELS

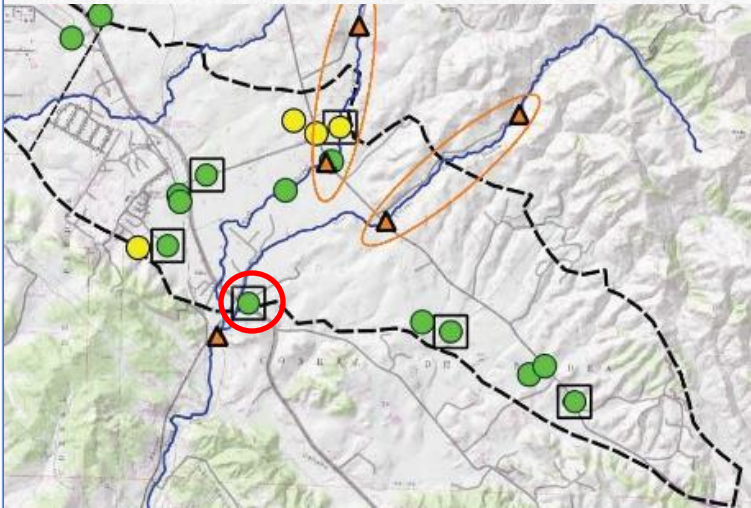




# Recommended SMC -- EV-11



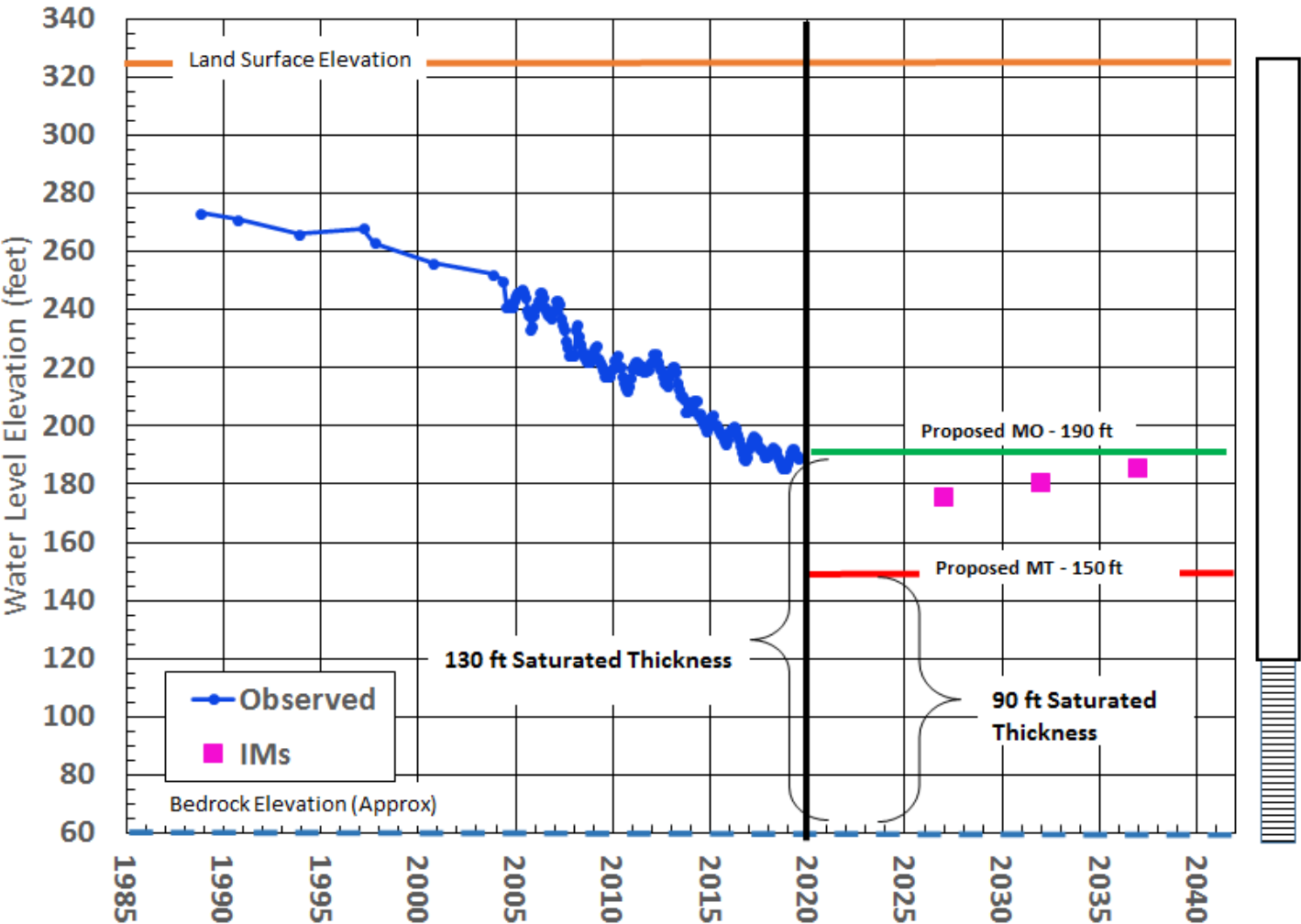
INTER-  
CONNECTED  
SURFACE  
WATER  
DEPLETIONS





# Recommended SMC -- EV-16

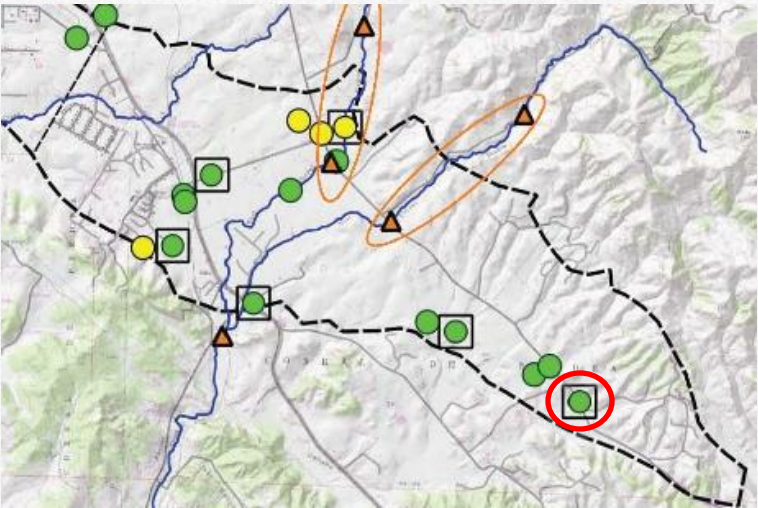
VRMWC #1



REDUCTION OF  
GROUNDWATER  
STORAGE



CHRONIC  
LOWERING OF  
GROUNDWATER  
LEVELS





# Proposed Undesirable Results



CHRONIC  
LOWERING OF  
GROUNDWATER  
LEVELS



REDUCTION OF  
GROUNDWATER  
STORAGE



INTER-  
CONNECTED  
SURFACE  
WATER  
DEPLETIONS

The Basin will be considered to have undesirable results if two representative wells within a defined area of the Basin display exceedances of the minimum threshold values for two consecutive Fall measurements. Geographically isolated exceedances will require investigation to determine if local or Basin wide actions are required in response.



---

# Proposed Undesirable Results



LAND  
SUBSIDENCE

Measured subsidence, using InSAR data, between June of one year and June of the subsequent year shall be no more than 0.1 foot in any 1-year and a cumulative 0.5 foot in any 5-year period, as a result of groundwater management under the GSP, and shall not result in long-term permanent subsidence.



---

# Proposed Undesirable Results



WATER QUALITY  
DEGRADATION

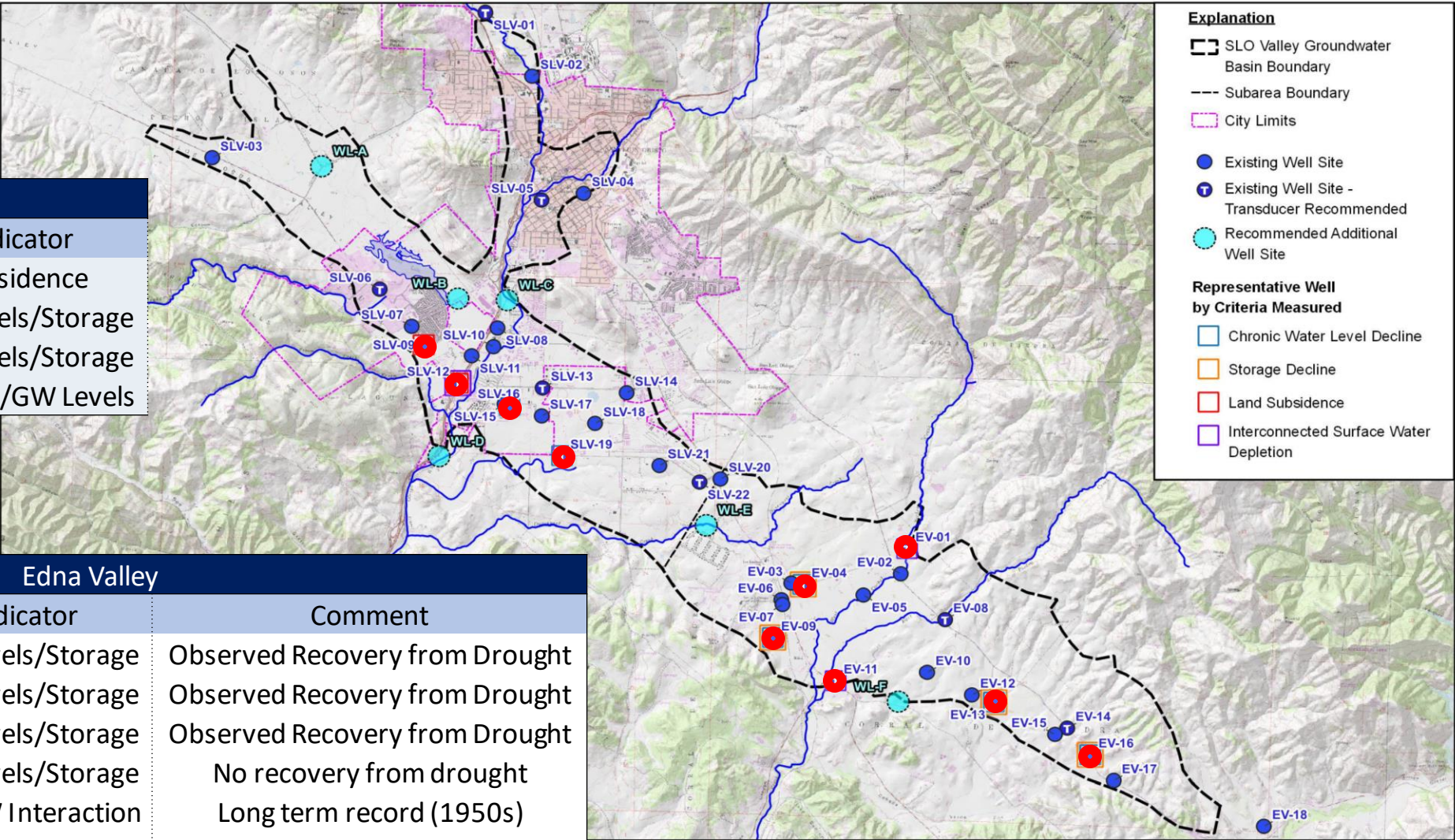
On average for any year, an increase in groundwater quality minimum threshold exceedances at 20 percent of the representative monitoring sites, in relation to 2015 Basin conditions, as a result of projects and management actions implemented as part of the GSP.



# Sustainable Management Criteria Groundwater Levels

SLO Valley			
ID	MT	MO	Indicator
SLV-09	102	110	Subsidence
SLV-16	70	90	GW Levels/Storage
SLV-19	80	110	GW Levels/Storage
SLV-12	85	100	SW/GW/GW Levels

Edna Valley				
ID	MT	MO	Indicator	Comment
EV-09	92	164	GW Levels/Storage	Observed Recovery from Drought
EV-04	170	250	GW Levels/Storage	Observed Recovery from Drought
EV-13	180	250	GW Levels/Storage	Observed Recovery from Drought
EV-16	150	180	GW Levels/Storage	No recovery from drought
EV-01	265	315	SW/GW Interaction	Long term record (1950s)
EV-11	178	226	SW/GW Interaction	CASGEM Well





---

# Recap of the Discussion Items from the March 31, 2021 GSC Meeting

1. What policies does the County have in place to restrict new pumping/additional agriculture within the Edna Valley to stop this problem from worsening?
2. Can MOs be higher to try to return basin to predevelopment levels?
3. Can we firmly justify why MT3 was selected in a few locations instead of a more conservative MT1?
4. Is it possible to implement a cap and trade system where each property is given a standard/sustainable per acre water allotment in which they could sell/trade that with neighbors or other basin users.
5. Why wait 5 years to implement programs to reduce pumping or implement projects? The problem will just get worse before 2026. What can be done now to make an immediate impact?





# Public Comments



## By phone:

Dial \*9 (then \*6 to unmute when prompted)

## From your computer:

Raise your hand by clicking the raise hand icon



# Future Items

## Chair



---

# REQUEST ACCOMMODATIONS

**Contact Dick Tzou**  
**County of San Luis Obispo**  
[dtzou@co.slo.ca.us](mailto:dtzou@co.slo.ca.us)  
**805-781-4473**